

Installation Instructions

TGSUVPROA SALT SPREADER

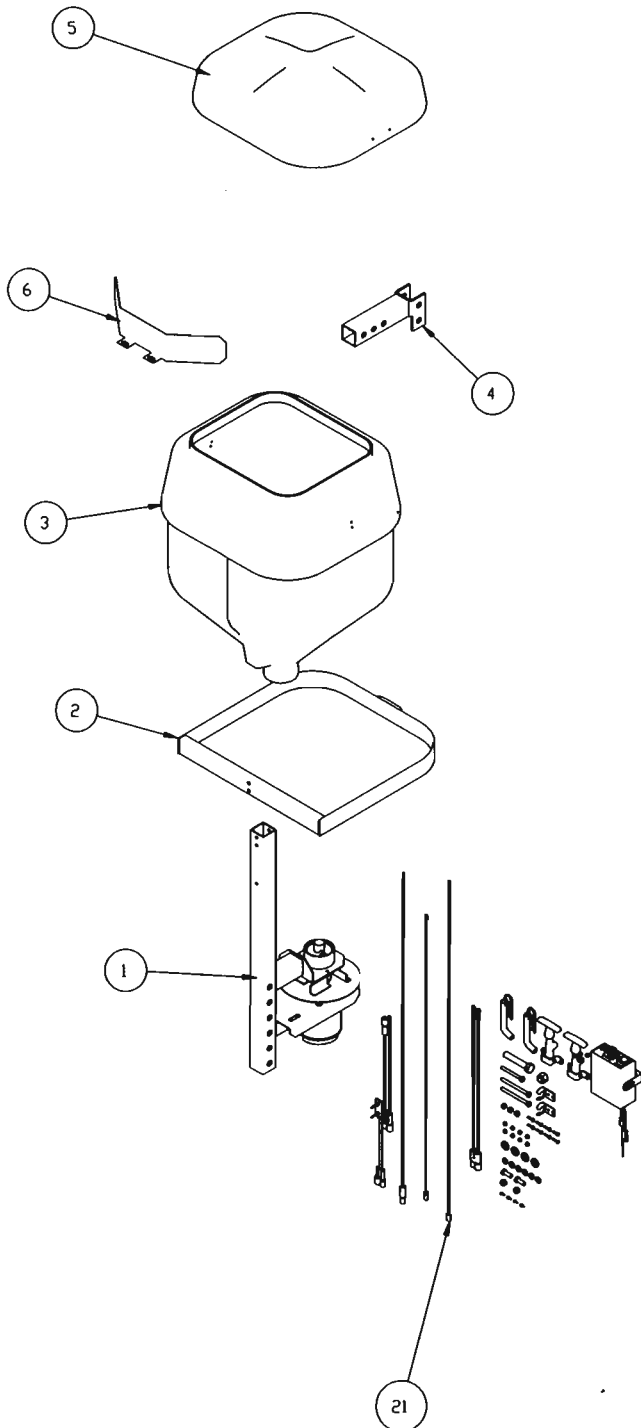


Fig. 1



Bill of Materials

ITEM NO.	PART NO.	DESCRIPTION
1	3005716	Motor and Frame Assembly, TGSUVPROA
2	3003902	Band, TGSUV1, Weldment
3	3005614	Hopper, w/Insert & Graphics, Assembly, TGSUV1
4	3004589	Rec. Mount, Swing Down, TGSUV1 Weldment
5	3003571	Lid, TGSUV1
6	3005977	Shield, Spinner, TGSUV1A
7	FCS031018400SS	Screw, HH Cap 5/16-18 x 4 SST
8	FWF031075006SS	Washer, 5/16 SAE SST
9	FCS03108300SS	Screw, HH Cap 5/16-18 x 3 SST
10	FNE031018034SS	Nut, Nylock 5/16-18 x 3 SST
11	3000544	Screw, HH Cap 5/8 x 3.5 GR. 5 Zinc
12	FNE063011069	Nut, Nylock 5/8-11
13	HP6253WC	Hitch Pin with HP Cotter
14	FCS038016100SS	Screw, HHC 3/8-16 x 1 304 SST
15	FWF038100007SS	Washer, Flat 3/8 USS SST
16	FNE038016044SS	Nut, Nylock 3/8-16 x 7/16 SST
17	3000626P	Keeper, Latch WJ201 Black
18	FBSH01002475SS	Screw, BHC #10-24 x .75 SST
19	FNE010024024SS	Nut, Elastic Stop 10-24 SS
20	3002982	Strap, Hood Catch, Black
21	3005715	Harness and Hardware, TGSUVPROA

SPREADER ASSEMBLY

See Fig. 1

Check contents of box against parts list to make sure all components are included. When ordering replacement or spare parts, refer to parts list for part numbers.

Tools Needed for Assembly

3/8 or 1/2 drive ratchet with 3/8, 7/16, 1/2, 9/16 & 15/16 sockets.

7/16, 1/2, 9/16 & 15/16 wrench.

1/8" Allen wrench

SPINNER SHIELD & RECEIVER MOUNT

See Fig. 2

Start the assembly by installing the 2" receiver mount (4) into your truck or SUV receiver hitch. This will give you a good way to hold the spreader during assembly. Mount the motor/frame assembly to the receiver mount by inserting the 5/8 bolt and nut (11, 12) in the bottom hole and the hitch pin (13) in the top hole. It is best to mount the frame at the highest possible position for assembly purposes. You can change the height later if desired. Install the spinner shield (6) with 3/8-16 x 1 HH cap screws, flat washers and hex nuts (14, 15, and 16). Position the shield about a 1/2" away from the spinner plate and center it to the spinner. The shield position can be changed later to alter the salt pattern if needed.

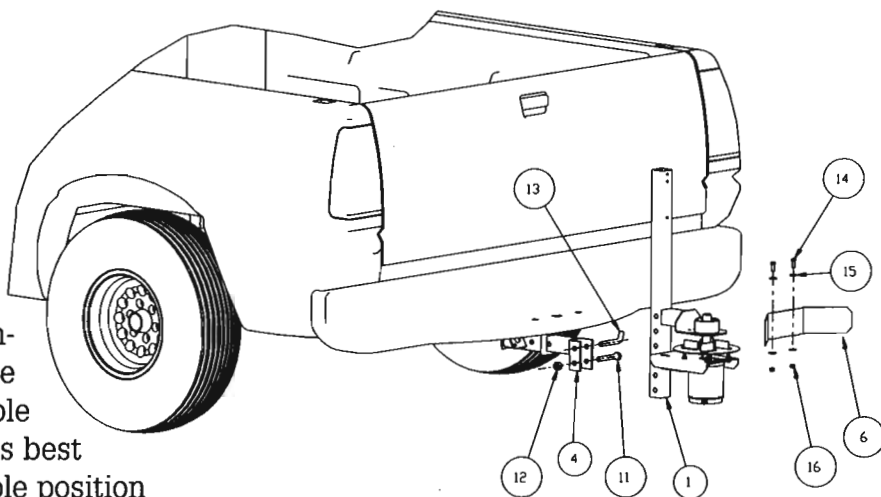


Fig. 2

HOPPER & BAND

See Fig. 3

Slide the support band (2) over the hopper (3) from the bottom until it touches the hopper lip. Slide the hopper/band assembly over the top of the frame tube and onto the sleeve below until the holes in the hopper and band line up with the holes in the frame tube. You must try to align the tube at the top and sleeve at the bottom at the same time. The hopper may be a tight fit over the sleeve so wiggling it back and forth should get it to slip over. Install two 5/16-18 x 4 HH cap screws (7) from the outside of the frame tube at the top through the band and hopper. Include flat washers on both sides (8) and nut (10) on the inside. Install 5/16-18 x 3 HH cap screw through the lower hole in the frame, into the hopper, with washers and nut on the inside of hopper. Tighten all nuts at this time and make sure the spinner still spins free afterward.

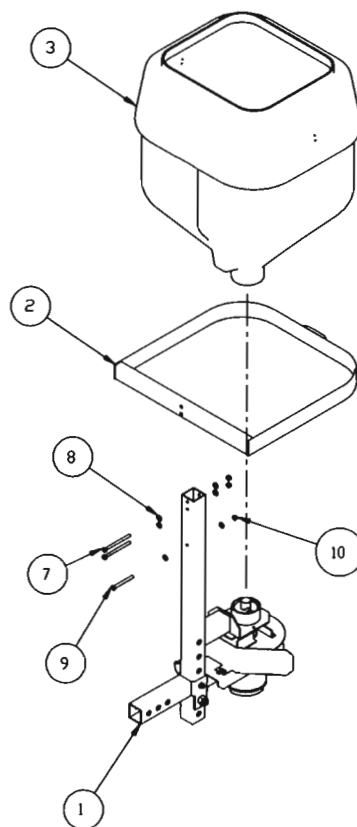


Fig. 3

COVER LATCHES

See Fig. 4

Install the cover latch keepers (17) onto the hopper using #10-24 socket head screws (18) and nuts (19). Make sure the keeper is facing down with the screws on top and that the screw head is on the outside and the nuts are on the inside. Install the cover latches (20) onto the cover using #10-24 socket head screws and nuts. Insert the screw thru the inside of the cover so that the nuts are on the outside of the cover.

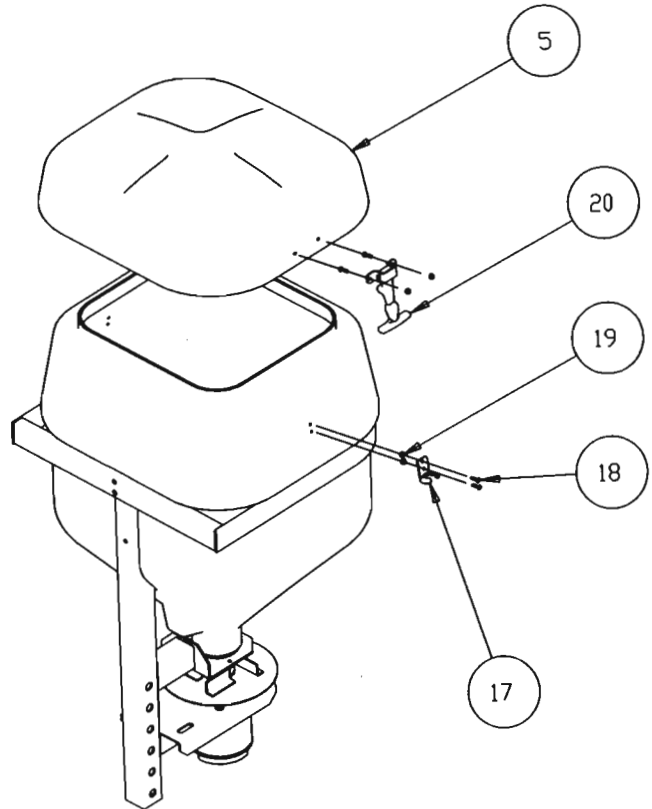


Fig. 4

Electrical Installation

See Fig. 5

Find a location for the speed control that is within reach and convenient for the driver. Attach mounting bracket to the vehicle dash or floor. Make certain the speed control is grounded by connecting the black ground wire to a suitable vehicle ground or directly to the negative post of the battery. Route the blue wire from the speed control location to the vehicle fuse panel. Find an accessory terminal on the fuse block that is "ON" only when the vehicle key is "ON". **Do not** connect the blue wire to the speed control at this time. Connect the eyelet end of the 96" lg. Red wire to the positive terminal of the battery and route the plug end through the firewall to the speed control. **Do not** connect the red wire to the speed control at this time. Route the 222" lg. Red wire from the rear bumper of the vehicle to the speed control, the large rubber end goes at the rear bumper and the hard plastic plug end goes at the speed control. Attach the rubber socket and dummy plug with bracket to the under side of the truck preferably to the bumper so that the motor lead will have some slack when plugged into it. Connect the black wire from the rubber socket to the frame or bumper bracket of the vehicle, clean off any paint or rust that will prevent a good connection. Connect spreader motor plug to mating truck plug. Protect truck mounted plug from corrosion by inserting dummy plug when spreader is not mounted on truck. Perform a motor run test before connecting speed control. Inside the cab, connect the red wire from the battery to the red wire going back to the motor

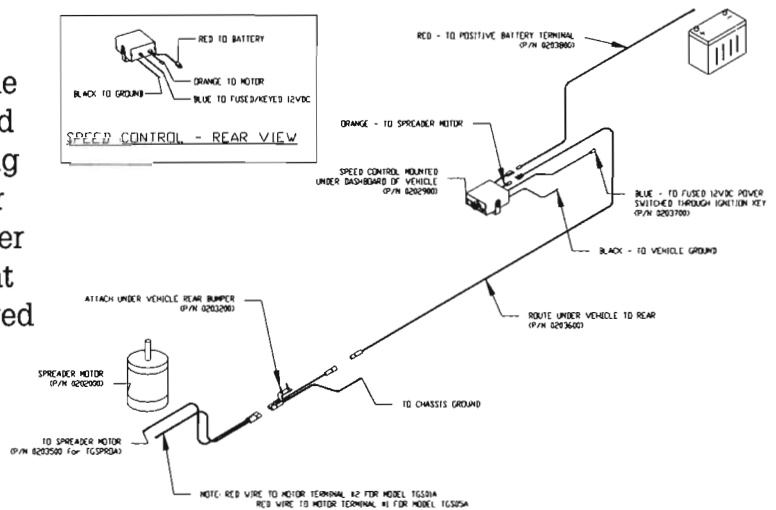


Fig. 5



with a jumper wire. The motor should run counter clockwise. If the motor runs clockwise then swap the wires at the motor terminals. If the motor does not run at all then chances are that the ground wire at the rear of the truck is not making a good connection. After the motor test is successful then connect the speed control in the cab. Test the spreader to make sure the speed can be adjusted and the blast feature is working. **CAUTION:** when connecting the speed control, do not allow the orange wire to touch any part of the vehicle or the case of the control itself. This will cause a short in the speed control and permanently damage the transistors. This is not covered by warranty.

TROUBLE SHOOTING

If the motor works in blast mode only then the small blue wire to the speed control is not getting 12VDC power, check to make sure the vehicle key is "ON" and then make sure the blue wire is getting power. Use a volt meter or test light if needed. If the speed control is erratic or not controllable then most likely the small black ground wire from the controller is not getting a good connection. Clean the connection area from dirt and paint and reconnect or relocate the wire to a better place if necessary.

OPERATION

Install unit on vehicle by sliding into receiver hitch. Be sure to install receiver safety pin. We recommend dumping 2-3 bags of #1 rock salt into

the hopper at a time, this way there will not be a lot of extra salt in the unit when you are done. Place the lid on the hopper and secure the latches. Start at one end of the driveway with the vehicle in low gear and idling. Start the spreader as soon as the vehicle starts to move. Do not accelerate the vehicle; best results are when the vehicle is moving in low gear at idle. Multiple passes over the driveway from both directions may be required. The fuse located in the plug end of the wire harness may blow if the salt you are using is wet or chunky. The spreader is designed to use dry loose #1 rock salt or similar size free flowing materials; using any other material may blow fuses and/or damage the spreader. We do not recommend leaving the spreader on the vehicle when traveling on roads for long distances. If you must leave it on the vehicle when traveling be sure the hopper is **EMPTY** and the plug is disconnected from the vehicle dash board. When the spreader is not in use empty the hopper and remove it from the vehicle. The spreader can be tilted down for access to SUV rear storage area or truck bed by removing the hitch pin from the top hole of the receiver mount. **CAUTION: DO NOT ATTEMPT TO TILT SPREADER WITH MATERIAL IN THE HOPPER OR WHILE VEHICLE IS MOVING.**

The spreader should be hosed off periodically to prevent corrosion of moving parts, disconnect the wiring harness at the plug near the motor before hosing off spreader. Store the spreader upside down with the lid off in a dry place. Make sure the wiring harness plug and the motor is dry and free of ice before using the spreader again.

FULL ONE YEAR WARRANTY

Manufacturer will repair, or at manufacturer's discretion will replace any part of this salt spreader which proves to be defective in workmanship or material under normal use for a period of one year from the date of delivery to the original purchaser. Any cost incurred in returning the product to the supplier is the responsibility of the consumer.

EXCLUSIONS

Manufacturer shall not be liable for special, incidental, or consequential damages, or for damages resulting from lack of necessary maintenance, from misuse, abuse, acts of God, or alteration of the product. Some states do not allow the exclusion or limitation of incidental or consequential damages, so the above limitation or exclusion may not apply to you.