

Installation Instructions

3014199 SHPE Spreader Controller

IMPORTANT!

Before installation, check your truck's battery and alternator using load tester. Do not proceed to installation if truck electrical system does not function properly.

NOTE: Always disconnect battery before attempting to install electrical components on your vehicle.

1. Mount the controller in a convenient location in the truck cab. It is not recommended to mount the controller directly in front of heat vents. Allow ample air space around controller.

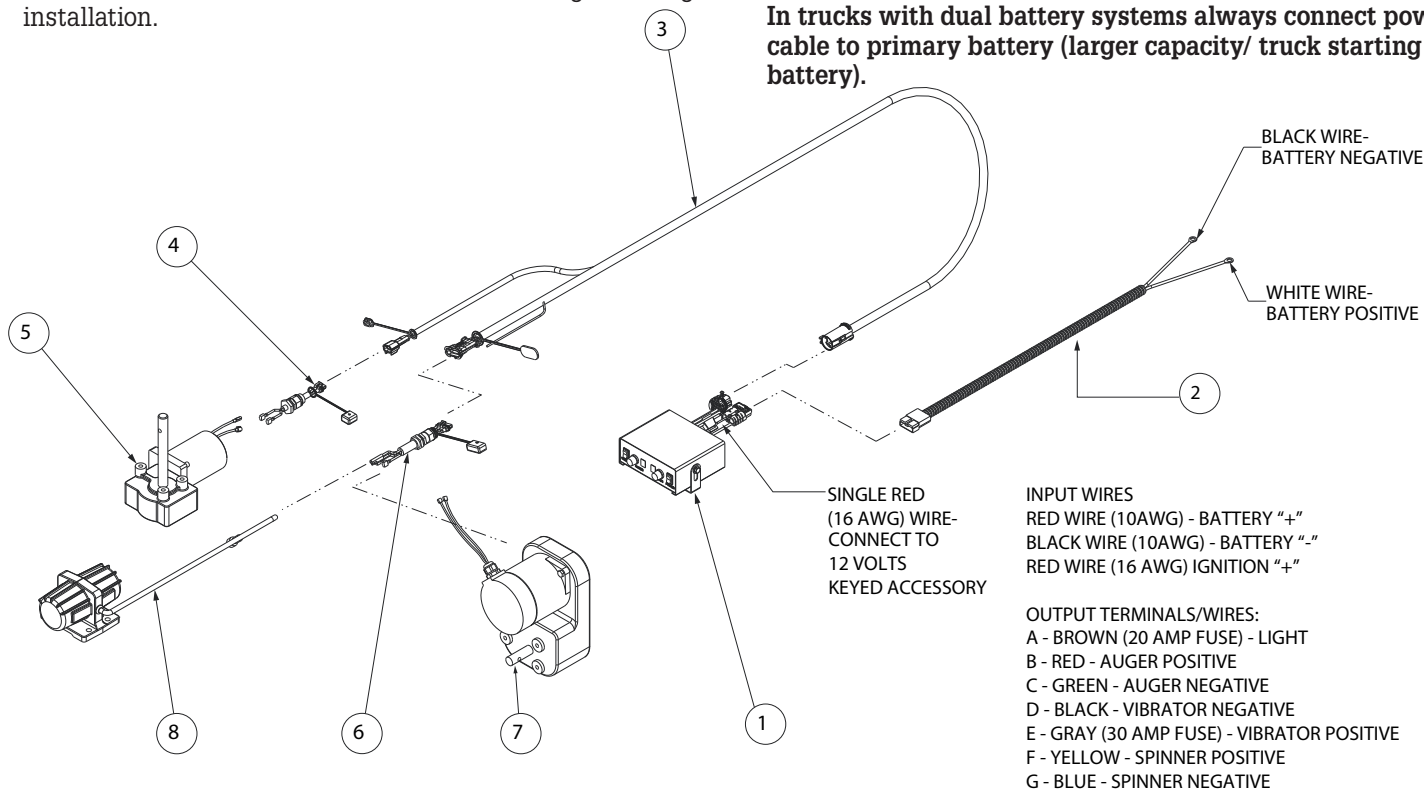
CAUTION!

Do not mount controller in the way of air bag deployment!

2. Route both wire harnesses into truck cab through firewall (it maybe necessary to drill holes). Insulate hole to avoid water leaks. Insure no wires are nicked or damaged during installation.

3. Connect the round connector on the wire harness to the control box.
4. Connect the 2-pin rectangular connector on the power cable to the control box.
5. Connect ignition wire to 12 volts keyed accessory (12VDC positive).
6. Lay out a path for the power cable to the battery, use quick ties to secure power cable.
7. Lay out path for wire harness to the rear of the vehicle. Stay clear of the exhaust system. Excess heat can damage the wire harnesses. Use quick ties to secure harness to underbody.
8. Connect the wire harness to the motors and vibrator.
9. Connect white wire to battery positive terminal. Connect black wire to battery negative terminal.

THIS IS A WIRE GROUND ELECTRICAL SYSTEM! NO CONNECTIONS TO TRUCK'S FRAME OR BODY ALLOWED!
In trucks with dual battery systems always connect power cable to primary battery (larger capacity/ truck starting battery).



Parts List

ITEM	PART NO.	QTY	DESCRIPTION
1	3014199	1	CONTROLLER, SHPE, SALT DOGG
2	3006842	1	POWER CABLE, CONTROL BOX
3	3006724	1	WIRE HARNESS, MAIN
4	3006753	1	WIRE HARNESS, CHUTE

ITEM	PART NO.	QTY	DESCRIPTION
5	3006833	1	GEAR MOTOR 12 VDC. SPINNER
6	3006844	1	WIRE HARNESS
7	3009995	1	GEAR MOTOR, AUGER SHPE
8	3007416	1	VIBRATOR 200 LBS 12 VDC

Controller Operation

1. To start spreader, be sure that truck engine is running to prevent battery from discharging. Flip power switch to ON position. Controller switches will illuminate. Auger and spinner motors will start with full speed for a short time (displays will show 9) and then drop to the speed settings selected.
2. To adjust speed simply rotate speed knobs until desired speed number is achieved.
3. To activate vibrator flip the Vibrator switch to ON position. Vibrator switch will illuminate. To turn vibrator OFF flip switch to OFF position.
4. To turn controller OFF, simply flip power switch to OFF position.

Controller Codes

	SYSTEM STATUS	SPEED DISPLAY	SPINNER DISPLAY	SOLUTION
1	POSITIVE WHITE WIRE DISCONNECTED FROM BATTERY,IGNITION WIRE CONNECTED	∟ BLINKING	∟ BLINKING	CONNECT WHITE WIRE TO BATTERY POSITIVE TERMINAL
2	AUGER MOTOR INTERNAL FUSE IS BLOWN	F		REPLACE FUSE, CHECK FOR SHORT CIRCUIT IN HARNESS, MOTORS
3	SPINNER MOTOR INTERNAL FUSE IS BLOWN		F	REPLACE FUSE, CHECK FOR SHORT CIRCUIT IN HARNESS, MOTORS
4	VIBRATOR INTERNAL FUSE BLOWN	U	F	REPLACE FUSE, CHECK FOR SHORT CIRCUIT IN HARNESS, VIBRATOR
5	SPINNER MOTOR DISCONNECTED		P	CONNECT MOTOR, CHECK WIRE HARNESS, MOTOR CONNECTORS"
6	AUGER MOTOR DISCONNECTED	A		CONNECT MOTOR, CHECK WIRE HARNESS, MOTOR CONNECTORS"
7	SPINNER MOTOR OVERLOADED		"SPEED NUMBER" BLINKING	CLEAR OVERLOAD SOURCE
8	AUGER MOTOR OVERLOADED	REVERSE CYCLING, THEN SHOW SPEED NUMBER BLINKING		CLEAR OVERLOAD SOURCE
9	VIBRATOR DISCONNECTED, VIBRATOR EXTERNAL FUSE BLOWN	U		CONNECT VIBRATOR, REPLACE FUSE
10	LOW VOLTAGE (LESS THEN 10 VOLTS FOR 10 SECONDS OR MORE)	L		TEST TRUCK ELECTRICAL SYSTEM WITH LOAD TESTER
11	TRUCK BATTERY VOLTAGE FLUCTUATION	"L" BLINKING	"O" BLINKING	TEST TRUCK ELECTRICAL SYSTEM WITH LOAD TESTER
12	INSIDE TEMPERATURE OVER 70C (158F)	C		RELOCATE CONTROLLER TO HAVE GOOD AIR CIRCULATION
13	WIRE HARNESS SHORT, AUGER MOTOR SHORT, SPINNER MOTOR SHORT	H	H	REPLACE SHORTED COMPONENTS
14	WIRE HARNESS MOTOR END, OR MOTOR SHORT	"SPEED" BLINKING		INSPECT FOR JAMS. IF NO JAMS FOUND, CHECK MOTOR HARNESS CONNECTORS FOR SHORT.

WARRANTY

Buyers Products Co. warrants all truck/trailer hardware manufactured or distributed by it, to be free from defects in material and workmanship for a period of one year from date of shipment. Parts must be properly installed and used under normal conditions. Any product which has been altered, including modification, misuse, accident or lack of maintenance will not be considered under warranty. Normal wear is excluded. The sole responsibility of Buyers Products Co. under this warranty is limited to repairing or replacing any part or parts which are returned, prepaid, and are found to be defective by Buyers Products Co. Authorization from Buyers Products Co. must be obtained before returning any part. No charges for transportation or labor performed on Buyers' products will be allowed under this warranty.